



Assembly, Installation, Operation and  
Maintenance Instructions  
4" Oval Straight Side Bar

**Part Number:**  
**A1557S/T**

**60 - 180 minutes**

**Dealer / Installer:** Provide a copy of these instructions to the end user of this product. These instructions provide important operating and safety information for proper usage of this product. Demonstrate the proper use of the product with the end user. Have the end user demonstrate that they understand the proper use of the product.

**End User:** Read and follow all instructions included in this manual. Ask your Dealer / Installer for assistance if you do not understand the proper use of the product. Never remove any decals from the product. Failure to follow these instructions can result in injury or death.

**⚠ WARNING ⚠**

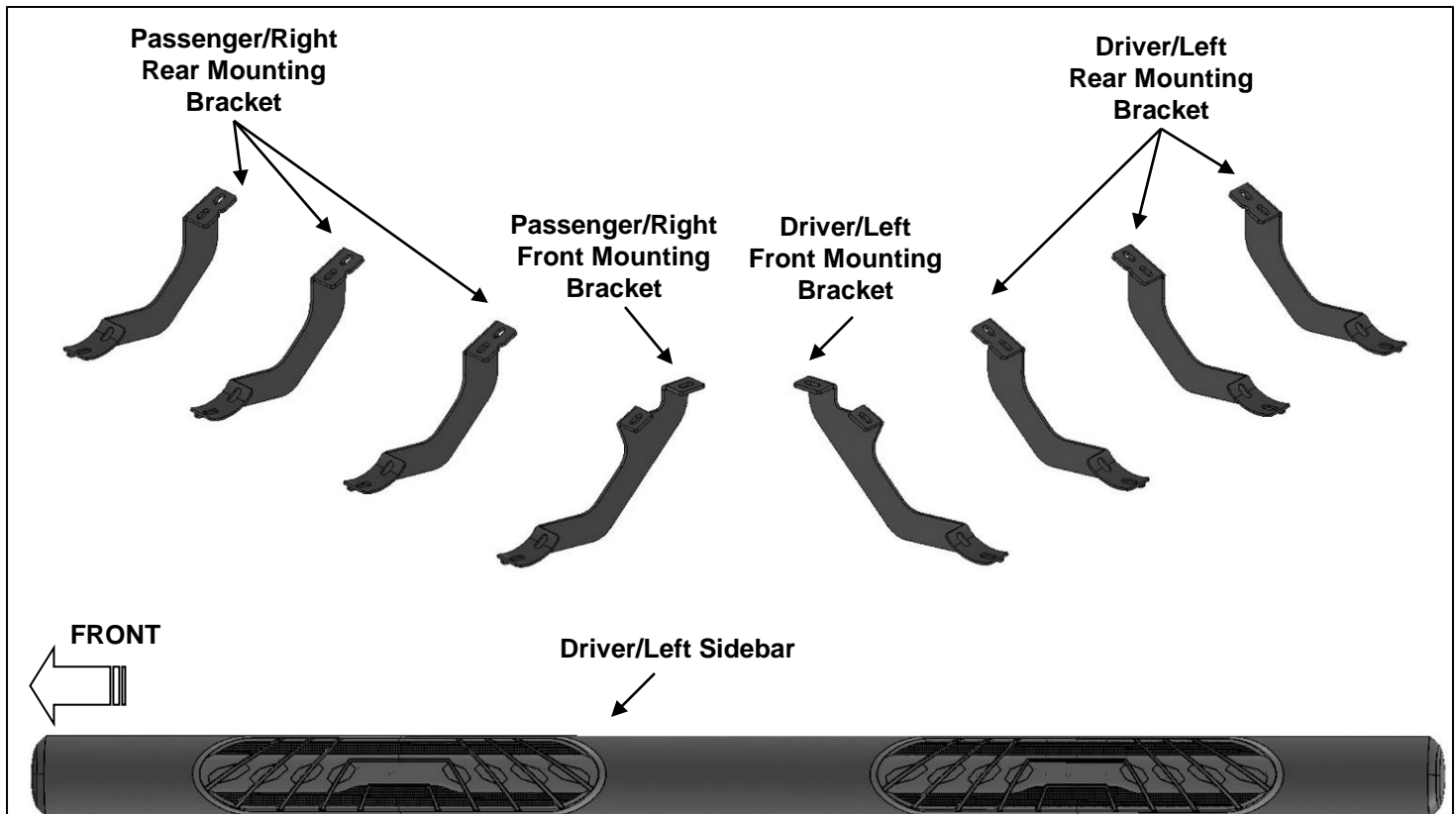
**APPLICATION: 2022-2023 TOYOTA TUNDRA DOUBLE CAB**

**PARTS LIST**

Qty	Part Description	Qty	Part Description
1	Driver/Left Sidebar	3	Passenger/Right Rear Mounting Brackets
1	Passenger/Right Sidebar	16	8mm x 30mm Hex Bolts
1	Driver/Left Front Mounting Bracket	16	8mm Lock Washers
1	Passenger/Right Front Mounting Bracket	16	8mm x 24mm OD x 2mm Flat Washers
3	Driver/Left Rear Mounting Brackets	16	8mm x 25mm Combo Bolts

**TORQUE SPECIFICATION**

Size	Torque	Size	Torque
08 MM	20.0 ft/lbs		



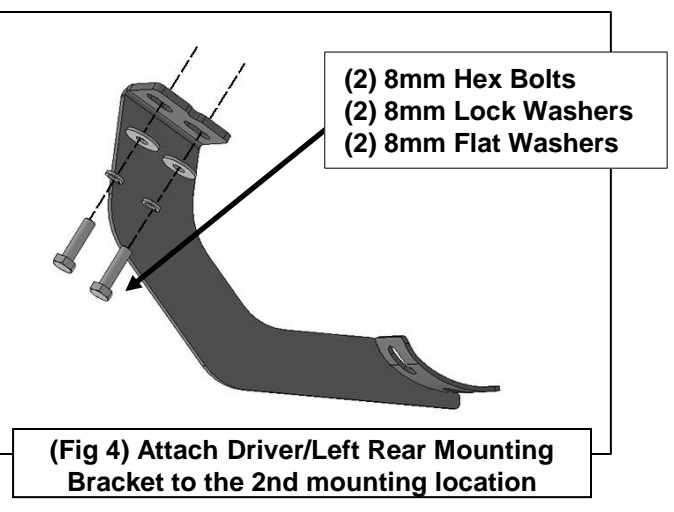
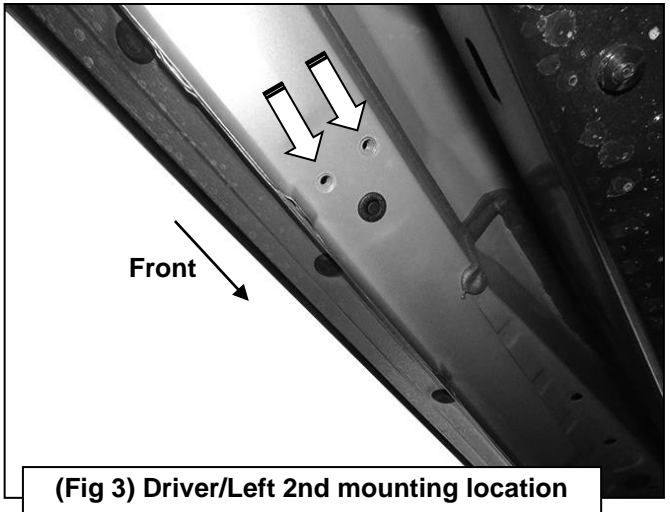
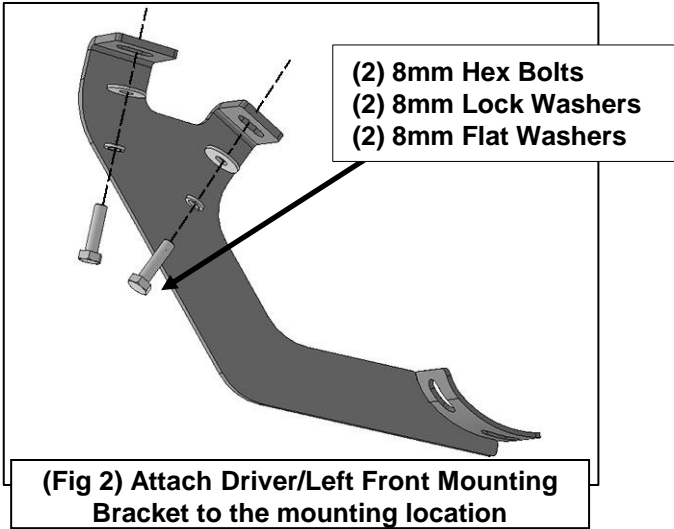
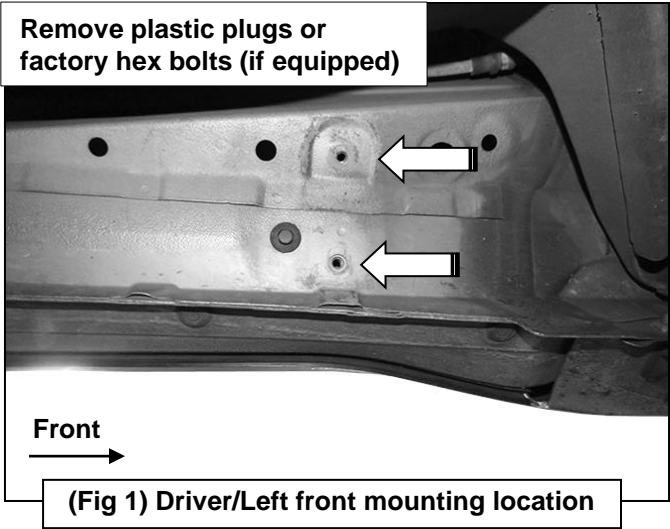
**INSTALLATION PROCEDURE:**

1. **REMOVE CONTENTS FROM BOX. VERIFY ALL PARTS ARE PRESENT. READ INSTRUCTIONS CAREFULLY. USE ILLUSTRATION TO IDENTIFY BRACKETS AND SIDE BAR.**
2. Starting on the Driver/Left front of the vehicle, remove the plastic plugs or hex bolts covering the (2) threaded holes in the floor panel, (Figure 1).
3. Select (1) Driver/Left Front Mounting Bracket, (Figure 2). Attach the Bracket to the mounting location with (2) 8mm Hex Bolts, (2) 8mm Lock Washers and (2) 8mm Flat Washers, (Figure 2). Do not tighten hardware
4. Select (1) Driver/Left Rear Mounting Bracket, (Figure 4). Repeat Step 3 to attach (1) Driver/Left Rear Mounting Bracket to the 2nd mounting location shown in the image below, (Figure 3).
5. Continue to the rear mounting locations, (Figure 5 & 6). Repeat Step 3 to attach (1) Driver/Left Rear Mounting Bracket each to the 3rd and 4th mounting locations.
6. Select the Driver/Left Sidebar. Attach the Sidebar to the Mounting Brackets with (8) 8mm Combo Bolts, (Figure 7). **IMPORTANT:** Do not slide the Sidebar, (forward or backward) or damage to the finish on the Sidebar may result. Do not tighten hardware.
7. Level and adjust the Driver/Left Sidebar and tighten all hardware.
8. Repeat Steps 2—7 to attach the Passenger/Right Sidebar.
9. Do periodic inspections to the installation to make sure that all hardware is secure and tight

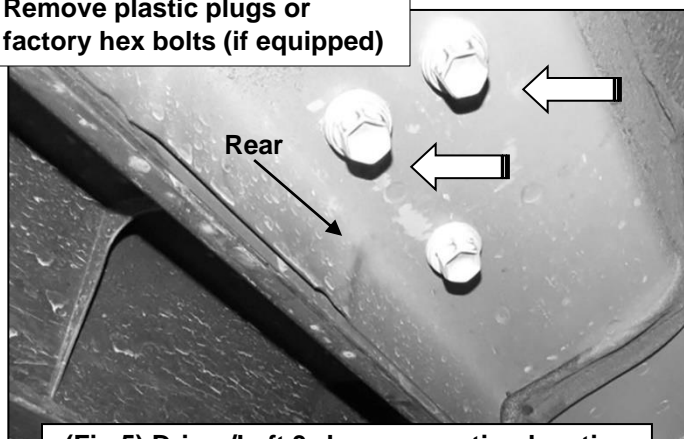
**To protect your investment,** Do not use any type of polish or wax that may contain abrasives that could damage the finish. Mild soap may be used also to clean Sidebars.

**INSTALLATION IMAGES:**

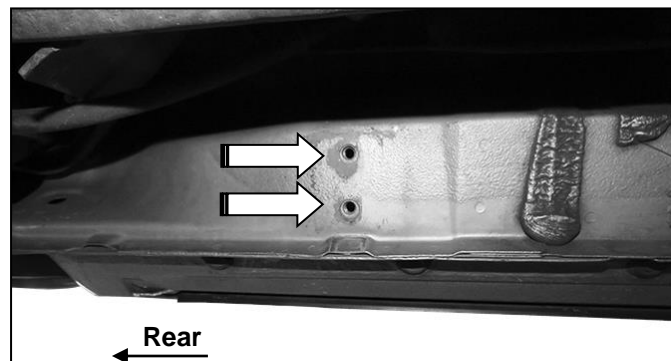
**Driver/Left Side Installation Pictured**



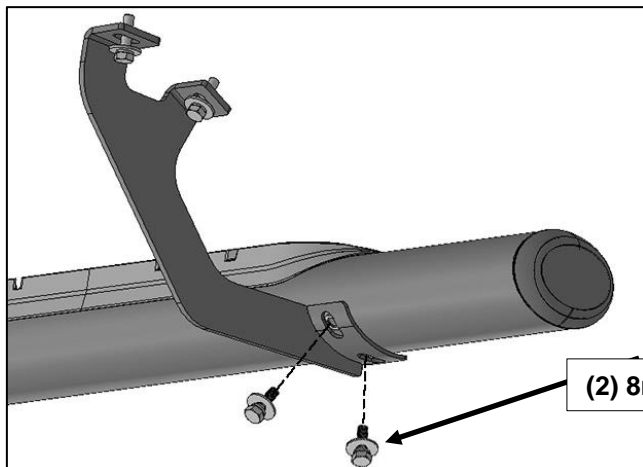
Remove plastic plugs or  
factory hex bolts (if equipped)



(Fig 5) Driver/Left 3rd rear mounting location



(Fig 6) Driver/Left 4th rear mounting location



(Fig 7) Attach Driver/Left Sidebar to the Front Mounting Bracket

## PRODUCT CARE

- Periodically check the product to ensure all fasteners are tight and components are intact.
- Regular waxing is recommended to protect the finish of the product.
- Use ONLY Non-Abrasive automotive wax. Use of any soap, polish or wax that contains an abrasive is detrimental and can scratch the finish leading to corrosion.
- Aluminum polish may be used to polish small scratches and scuffs for Stainless Steel finish.
- Mild soap may be used to clean the product for both Stainless Steel and Black finish.

## FAQ's

### 1. Hardware and mounting brackets are not aligning properly

Ensure that hardware is being used on the correct side of vehicle. In some cases, the hardware may appear the same for driver and passenger side but may alter the alignment of mounting location. Check mounting brackets for both sides.

### 2. Products are thumping / rattling after Installation

Ensure that all required mounting brackets / hardware's are installed & tightened correctly.

Suggest using white Lithium / regular grease between metal-to-metal contact.

### 3. Missing / Excess Hardware

Recheck hardware count as per the part list.

### 4. Product not installing properly

Ensure the Year / Make / Model as well as cab and bed dimensions are correct for the application. Review all steps for installation to ensure they were followed correctly.

### 5. Who should be contacted for questions regarding product / installation assistance?

[www.trailfx.com](http://www.trailfx.com) / [support@trailfx.com](mailto:support@trailfx.com) or 1-(866) 638-4870

# Warranty Terms:

**Black Powder Coated:**  
**Stainless Steel Polished:**

**3 Year Limited Warranty**  
**Limited Lifetime Warranty**

TrailFX and Keystone Automotive Operations Inc. make no guarantees or warranties for products not manufactured by Keystone Automotive Operations Inc. Such products are covered solely under any applicable warranty of the manufacturer. It is always recommended that the operating instructions and warranty instructions provided by the manufacturer are followed.

Keystone Automotive Operations Inc. warrants its products to be free from manufacturing and material defects to the original purchaser for the length of warranty stated above from the date of retail purchase. If any products are found to have a manufacturing or material defect, the product will be replaced or repaired at the option of TrailFX and Keystone Automotive Operations Inc. with proof of purchase by the original purchaser. The original purchaser shall pay all transportation and shipping costs associated with the return of the defective product and the defective product shall become the property of Keystone Automotive Operations Inc.

The Warranty applies to Keystone Automotive Operations Inc. products used for individual and recreational purposes. Commercial usage of the Keystone Automotive Operations Inc. products limits the warranty to 90-days from date of purchase.

The Warranty applies only to Keystone Automotive Operations Inc. products which are found to be defective in manufacturing or material. This warranty does not apply to normal wear and tear of the finish placed on Keystone Automotive Operations Inc. products.

TrailFX and Keystone Automotive Operations Inc. are not responsible for any labor costs incurred for removal or replacement of the defective product.

TrailFX and Keystone Automotive Operations Inc. are not responsible for repair or replacement of any product under the limited warranty where the product was improperly installed, misapplied, altered, abused, neglected, overloaded, misused or damaged as a result of an accident, including any use of the product not in accordance with all product operating and safety instructions.

Without limiting the generality of the foregoing, TrailFX and Keystone Automotive Operations Inc. shall under no circumstances be liable for any incidental or consequential loss or damage whatsoever arising out of, or in any way relating to any such breach of warranty or claimed defect in, or non-performance of the products. Some states do not allow the exclusion or limitation of incidental or consequential damages, so the above exclusion or limitation may not apply to you.

This limited warranty gives you specific legal rights, and you may also have other rights that vary from state to state.